



Accelerating HOPE

2023 ANNUAL REPORT



GLOBAL
LYME
ALLIANCE

TABLE OF CONTENTS

From Our CEO & Chairman.....	3
Mission & Vision.....	5
Accelerating Impact: 2023 by the Numbers.....	6
FY 2023 Overview.....	7
Highlights.....	8
Our Leadership.....	16
Financials.....	17



"We extend our heartfelt thanks for standing with us."

Laura MacNeill, CEO

A LETTER FROM OUR CEO & CHAIRMAN

Dear Friends,

We are excited to share with you the 2023 Annual Report from Global Lyme Alliance (GLA). This report highlights the groundbreaking work GLA has accomplished in Lyme disease research, awareness, and patient services throughout the past year, marking an incredible 25 years since our first initiative in 1998. Thanks to the unwavering support of our donors, the dedication of our internal team, and a clear and focused mission, GLA continues to make remarkable progress raising awareness, enhancing patient care, developing reliable diagnostics, improved treatments, and ultimately, driving towards a cure.

The reality today is that more people than ever are suffering from Lyme and other tick-borne diseases. The Centers for Disease Control and Prevention reports that 500,000 new cases of Lyme disease are diagnoses each year in the U.S. alone. Combined with the increasing prevalence of ticks, the other diseases they carry, and their expanding geographical range, we are facing a rapidly growing health crisis.

Fortunately, GLA is at the forefront of discovery and innovation, serving as a catalyst for change in Lyme and tick-borne disease community. GLA stands as the leading nonprofit organization in space, thanks to the strength of our research program which is guided by our Chief Scientific Officer, Research Advisory Committee, and Medical and Scientific Advisory Boards.

Their expertise and ability to connect scientists, clinicians, industry, and government make GLA a preferred partner, bridging the gap between research and real-world experiences. Our research is driven by the needs of the patients.

In 2023, GLA's Patient Services Program made significant strides. Our Peer Mentoring program provided patients with emotional support and practical advice, while the Ambassador Program raised awareness through volunteer-led events throughout the country. Additionally, our Healthcare Referrals ensured that patients had access to Lyme-literate healthcare providers. These initiatives highlight GLA's deep commitment to patient support and the impactful contributions of our volunteers. We extend our heartfelt thanks for standing with us. With the continued support of our community, we will accelerate the advancement of Lyme and tick-borne disease knowledge by funding brilliant minds, fostering innovative ideas, and pursuing results-driven efforts to benefit all Lyme and tick-borne disease patients and their families.

Sincerely,



Laura MacNeill

Chief Executive Officer
Global Lyme Alliance



Paul Ross

Chairman
Global Lyme Alliance



Mission & Vision

Our Mission: Cure Lyme and other tick-borne diseases through innovative research, awareness, and empowering the patient voice.

Our vision: A world free of Lyme and other tick-borne diseases



GLOBAL LYME ALLIANCE

“

With the continued support of our community, we will accelerate the advancement of Lyme and tick-borne disease knowledge by funding brilliant minds, fostering innovative ideas, and pursuing results-driven efforts to benefit all Lyme and tick-borne disease patients and their families.

-Laura MacNeill, CEO
Global Lyme Alliance

”

2023 By the Numbers

Accelerating Impact



\$ 17,000,000,000

Million invested in research



\$ 112,350,474

The value of our online publicity



95,678

social media
community members



130

New Lyme Ambassadors
onboarded to the program



4,000

New Lyme Disease
Specialist Referrals



+ 44 %

Our Peer-to-Peer
Mentor Program growth



FY 2023 Overview

In 2023, we made significant strides in Lyme and tick-borne disease research by supporting 7 researchers and continuing our investment in Flightpath Biotechnologies, a clinical-stage life sciences company working to bring the first new targeted Lyme disease treatment to market in over 30 years. Our commitment to improving treatment and care for children remains strong as we continue to invest in Pedi Lyme Net, the only pediatric Lyme disease biobank, which is an invaluable resource for advancing the diagnosis of Lyme disease in children.

GLA CEO Laura MacNeill marked her second year of leadership by welcoming Steve Pekock as our new Director of Development. Steve has been instrumental in securing financial support through effective fundraising strategies. In 2023, we introduced a strategy encouraging multi-year pledges, resulting in a 40% increase in direct giving for FY23. This approach has significantly improved our income forecasting and financial stability.

GLA continues to fund critical research identified as essential by our Science Team, Research Advisory Council (RAC), and Scientific Advisory Board (SAB) to advance diagnostics and treatment for Lyme and tick-borne diseases. We have maintained our position as a vital resource for those suffering from chronic Lyme

disease and their caregivers, remaining one of the most visited Lyme-related online communities worldwide.

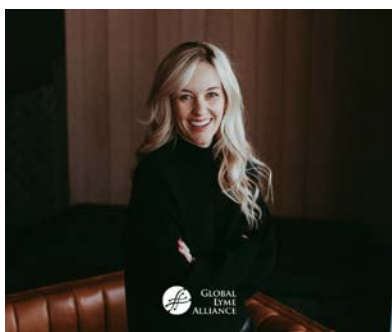
In 2023, we revitalized GLA's Ambassador and Peer-to-Peer Mentor Programs, creating a stronger, more connected community of changemakers. Our education and awareness initiatives reached millions through online platforms and social media, and we hosted successful fundraising events while establishing new corporate partnerships.

Our research portfolio remains robust, with over \$17 million invested in new and ongoing initiatives in 2023. As we look ahead, we are expanding our leadership and donor base, reducing unnecessary costs, and ensuring that GLA remains a dynamic organization focused on breakthroughs that will defeat Lyme and other tick-borne diseases. The increased revenue will support a new research strategic plan, aligning GLA's research goals with our future vision to cure Lyme and other tick-borne diseases.

Our mission to conquer Lyme and other tick-borne diseases through innovative research, raising awareness, and empowering the patient voice continues to propel us forward. We are deeply grateful for the support of our volunteers and donors, who have helped us achieve so much in 2023. Here are some highlights from the past year.



Highlights 2023



March 2023 – GLA Appoints New Board Member

Global Lyme Alliance (GLA) proudly welcomed Kenzie Vath to its Board of Directors. As Vice President of Strategic Innovation for Pacific Hospitality Group in Southern California, Kenzie is also the founder of Holistic Umbrella. Kenzie brings her unique expertise and a commitment to Lyme advocacy. In 2023, she authored *The Ignored Pandemic: Real Stories of Lyme Disease*, sharing powerful interviews with Lyme survivors worldwide.

Read the full press release [here](#).



May 2023 – GLA Launches Lyme Awareness Month Campaign

During Lyme Disease Awareness Month, GLA launched a campaign to educate the public on Lyme and TBDs, achieving significant impact. The website saw 80,706 sessions, press coverage reached 3.4M with \$140K in publicity value, and social media efforts garnered 500K+ impressions. This exposure amplifies our mission to educate and support those affected by Lyme disease.

Read the full press release [here](#).



April 2023 – GLA Funded-Research in the News

A study led by GLA-funded scientist Dr. Choukri Ben Mamoun has brought attention to the Babesiosis parasite, specifically *Babesia duncani*, which is found primarily along the Pacific coast. While *Babesia microti* is the more commonly studied species, this groundbreaking research highlights the significance of *Babesia duncani*, marking a critical advancement in our understanding of tick-borne diseases.

Read the full story [here](#).



May 2023 – GLA Partners with Sypher Studios and Fieldhouse Productions for the May 30th Release Of, I'm Not Crazy, I'm Sick

GLA partnered with Sypher Studios and Fieldhouse Productions for the May 30 release of the Lyme disease documentary, *I'm Not Crazy, I'm Sick*. Highlighting Lyme disease's impact, the trailer garnered 1.1M views and was featured on Variety.com. GLA CEO Laura MacNeill and Executive Producer Atty Cleworth discussed the importance of the documentary on the hit news show Good Day New York.

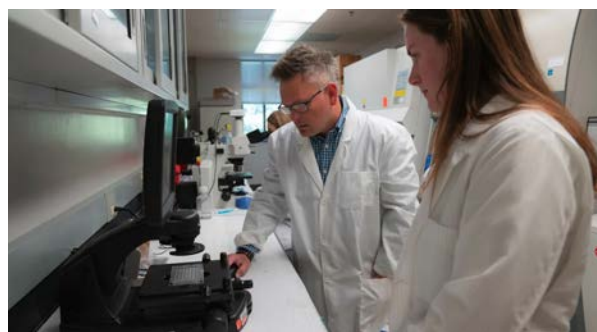
Read the full story [here](#).



June 2023 – 2nd Annual GLA Charity Golf Tournament Raises \$215,000 for Tick-Borne Disease Research and Awareness

The tournament raised \$215K for tick-borne disease research and awareness. Held at Greenwich Country Club, with golf pro Jimmy Walker as Honorary Chair, the event featured a lively auction. Special thanks to GLA Vice Chair Charles Balducci for his vital leadership.

Read the full story [here](#).



June 2023 – GLA Funded Researchers Awarded Additional \$1.2 Million To Create Rapid and Accurate Lyme Disease Testing

The Jutras Lab at Virginia Tech, initially funded by Global Lyme Alliance, has received an additional \$1.2 million grant from the Department of Defense to develop a rapid, at-home Lyme disease test. This significant funding highlights the critical importance of GLA's research discoveries as well as our role in advancing critical Lyme disease diagnostics.

Read the full story [here](#).



August 2023 - GLA Produces New Lyme Disease PSA Featuring Christopher Meloni

Christopher Meloni, known for Law & Order, stars in a PSA for GLA, sharing his family's Lyme disease journey. Featured on major outlets like *Today*, *People*, *NBC*, and *Good Day LA*, the PSA airs nationally, raising awareness of the urgent need for better Lyme diagnosis and treatment.

Read the full press release [here](#).



August 2023 – GLA Partners With Leading Compression Brand Tommie Copper

In collaboration with GLA Ambassador Christopher Meloni, Tommie Copper launched a fundraising campaign featuring their "Hero" product where 5% of sales supported the fight against Lyme, blending wellness with impactful advocacy.

Read the full story [here](#).



September 2023 – GLA Announces New Research Grants

GLA announces its new research grants for 2023. The studies, at Tufts University, focus on understanding why some patients develop chronic Lyme disease even after treatment, and the potential of an anti-inflammatory therapy for patients.

Read the full press release [here](#).



October 2023 - Global Lyme Alliance Raises Over \$1.6 Million at the 2023 GLA Gala

Global Lyme Alliance (GLA) raised over \$1.6 million at its 2023 Gala, held at Cipriani 42nd Street in Manhattan. The event featured celebrity guests such as Christopher Meloni, Debbie Gibson, Ashley Loren, celebrated GLA's mission to advance research and raise awareness for Lyme and other tick-borne diseases.

Read the full press release [here](#).



October 2023 - GLA's Powerful Lyme Disease PSA Featuring Christopher Meloni Lights Up Times Square

The PSA, starring Christopher Meloni is showcased in New York City's iconic Times Square. This campaign aims to dismantle stigmas surrounding Lyme disease and encourages those affected to seek help, reaching a massive audience with significant impact.

Read the full press release [here](#).



December 2023 - GLA Selected to Join TRAIN with FasterCures

Global Lyme Alliance has been selected to join the prestigious Research Acceleration and Innovation Network (TRAIN) with FasterCures. This inclusion enhances opportunities for groundbreaking Lyme disease research and treatment strategies, positioning GLA as a key player in the global effort to accelerate biomedical research.

Read the full story [here](#).

Accelerating Progress: 25 Years of Advancing Lyme Disease Research

In 2023, Global Lyme Alliance (GLA) proudly marked a milestone: 25 years dedicated to combating Lyme disease. The journey began in 1998 when GLA provided \$2 million in funding to Columbia University, establishing the nation's first Lyme and Tick-Borne Disease Research Center. By 2007, under the leadership of Dr. Brian Fallon, M.D., the center opened its doors, focusing on the chronic aspects of Lyme and related tick-borne diseases.

GLA's instrumental role in funding this center underscored the necessity of including patients experiencing persistent symptoms, who have historically been overlooked in research efforts. The center's mission continues to be the support of leading researchers in unraveling the complexities of these diseases. Since its inception, the Columbia Center has generated numerous research publications, leading to several significant discoveries. [Learn more about the center, here.](#)



Accelerating Impact:

GLA and QuidelOrtho – A Partnership Success Story

In 2023, GLA formed a partnership with QuidelOrtho Corporation, a pioneer in in vitro diagnostics and the creator of the only FDA-approved rapid point-of-care Lyme disease test. This collaboration aimed to raise awareness about the importance of early Lyme disease diagnosis and to honor patients across the country.

QuidelOrtho's sponsorship of GLA's Find a Healthcare Provider Program marked a major advancement in our mission. This initiative successfully connected over 4,000 patients with Lyme specialists – a remarkable 24% increase from the previous year - and established QuidelOrtho as GLA's Official Sponsor during Lyme Disease Awareness Month. Their joint efforts in hosting PACE-accredited webinars have provided education for healthcare providers and the public alike, significantly enhancing awareness around Lyme disease diagnosis and treatment

A standout element of their sponsorship was QuidelOrtho's support of GLA's Chronic Lyme Disease PSA, showcased on a Times Square billboard from October to December 2023, reaching millions. This campaign aimed to inform the public and destigmatize chronic Lyme disease, encouraging individuals to seek assistance without fear of judgment.

Collaborations with corporations like QuidelOrtho are invaluable to our mission, offering essential support through sponsorships, educational initiatives, and public awareness campaigns. These partnerships have strengthened GLA's efforts in the battle against Lyme disease.



Accelerating Discovery:

This year Global Lyme Alliance (GLA) unveiled a comprehensive three-year research strategic plan designed to tackle the intricate challenges posed by Lyme disease and other tick-borne illnesses. Acknowledging the significant gaps in current knowledge and needs of patients, GLA aims to uphold its legacy of empowering advancements in basic, translational, and clinical research.

The strategic focus includes investigating the mechanisms underlying tick-borne diseases, developing improved diagnostics for both early and chronic Lyme disease, and exploring treatments that enhance quality of life while seeking a cure for chronic Lyme patients.

Additionally, this plan highlights GLA's commitment to forging new partnerships to diversify research opportunities and catalyze innovations that will enhance its scientific infrastructure. By adhering to this strategic roadmap, GLA aims to strengthen its capacity to drive significant progress in Lyme and tick-borne disease research, improving diagnostics, treatments, and the lives of patients.



GLOBAL LYME ALLIANCE'S BOARD OF DIRECTORS IS COMPRISED OF DEDICATED INDIVIDUALS WHO CARE DEEPLY ABOUT THE MISSION OF DEVELOPING RELIABLE DIAGNOSTIC TESTS, EFFECTIVE TREATMENTS, AND ULTIMATELY A CURE FOR LYME AND OTHER TICK-BORNE DISEASES.

OUR LEADERSHIP

EXECUTIVE LEADERSHIP

LAURA MACNEILL CEO | **TIMOTHY J. SELLATI** PH.D. CHIEF SCIENTIFIC OFFICER

BOARD MEMBERS

PAUL ROSS CHAIRMAN, INTERIM CEO, DIRECTOR | **ROBERT KOBRE** CHAIRMAN EMERITUS
JANET VACCARO SECRETARY | **HENRY DOSCH** TREASURER | **DEBORAH SICILIANO** VICE CHAIR
DIANE BLANCHARD VICE CHAIR | **CHARLES BALDUCCI** VICE CHAIR
NANCY DEL GENIO DIRECTOR | **ROSE ANASTASIO** DIRECTOR | **RIDGWAY BARKER** DIRECTOR
JULIA KNOX-COMEAU DIRECTOR | **CHRIS CORRINET** DIRECTOR | **DAVID GERSTNER** DIRECTOR
EDWARD O'CONNELL DIRECTOR | **KAREN KELLY** DIRECTOR | **BRETT KRISTOFF** DIRECTOR
STEVE LEFKOWITZ DIRECTOR | **LEWIS LEONE** DIRECTOR | **STEVEN MARTIN** DIRECTOR
DANA MCAVITY DIRECTOR | **LORRIE NADEL** DIRECTOR | **KAREN PEETZ** DIRECTOR
DAVID NOLAN DIRECTOR | **PETER NORLEY** DIRECTOR | **BRENT PATRY** DIRECTOR
NORMA RUSSO DIRECTOR | **AZIZ SYRIANI** DIRECTOR | **ALEXANDER TISCH** DIRECTOR
ERIN WALKER DIRECTOR

Scientific & Medical Advisory Boards

The goal of GLA's prestigious advisory boards are to provide strategic guidance for our research programs judged to have the best prospect of delivering measurable results and significant, marketable advances.

Scientific Advisory Board (SAB)

Adriana Marques, M.D. NIH | **Armin Alaedini, Ph.D.** Columbia University
Catherine Brissette, Ph.D. University of North Dakota | **Charles Chiu, M.D., Ph.D.** UC-San Francisco
John Belisle, Ph.D. Colorado State University | **Linden Hu, M.D.** Tufts University
Paul Arnaboldi, Ph.D. New York Medical College
R. Mark Wooten, Ph.D. University of Toledo | **Richard Marconi, Ph.D.** Virginia Commonwealth University
Utpal Pal, Ph.D. University of Maryland | **Volker Fingerle, M.D.** Bavarian FDA
Klemen Strle, Ph.D. Tufts University, Takeda, Broad Institute

Research Advisory Committee (RAC)

Armin Alaedini, Ph.D | **Diane Blanchard** | **Nancy Del Genio** | **Rob Kobre**
Lise Nigrovic, MD, MPH | **Paul Ross** | **Laura MacNeill, MBA**



2023

Financial Highlights

GLA is driven by donations from the community; whether it's \$50 or \$5,000, every dollar counts. The generosity and commitment of our supporters propels GLA's mission to conquer Lyme disease, and most importantly help patients. For complete financial information, including current IRS-990, go to GLA.org/financials

GLOBAL LYME ALLIANCE, INC.

STATEMENTS OF FINANCIAL POSITION

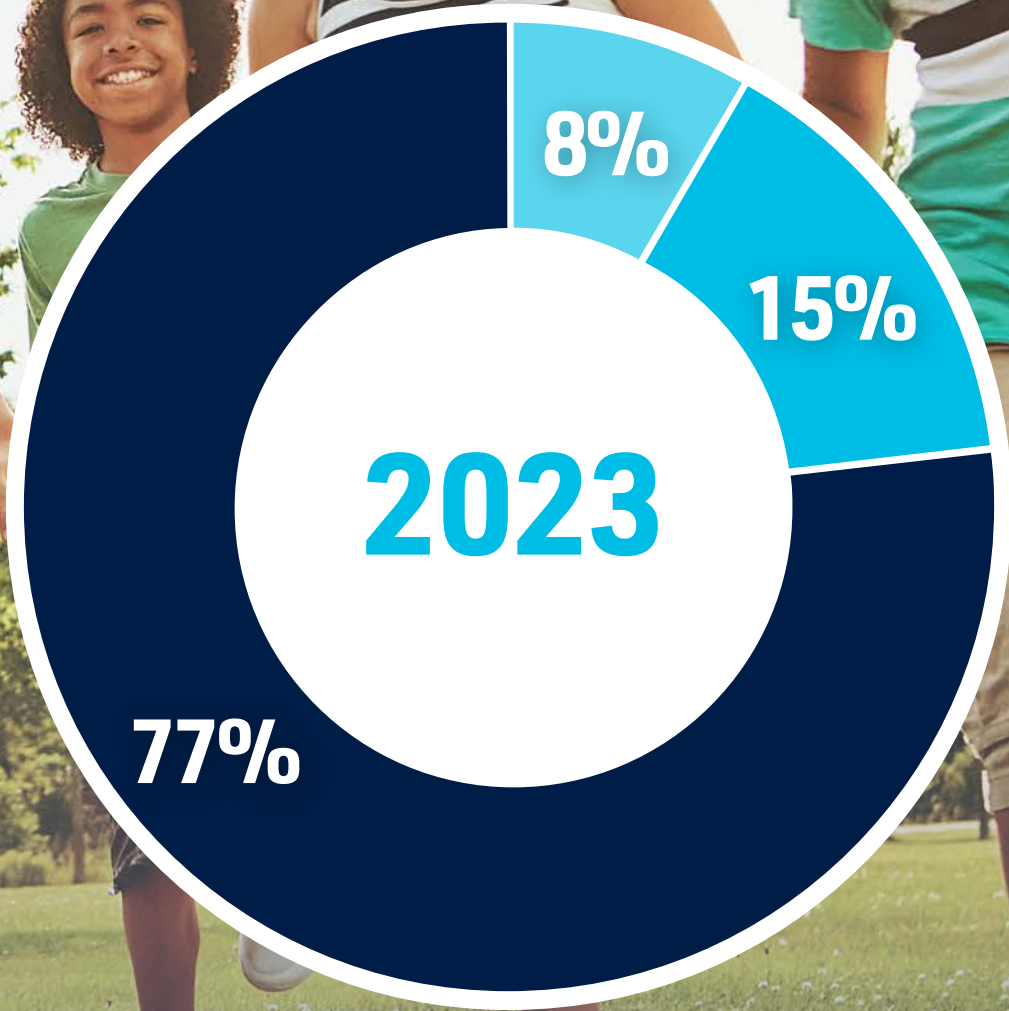
DECEMBER 31, 2023 AND 2022

	2023	2022
SUPPORT AND REVENUE		
Contributions	\$1,889,389	\$1,356,844
Special events income. Net of \$435,874 of direct expenses	1,124,108	1,370,310
Fee for service income	100,000	93,925
Contributed nonfinancial assets	26,470	38,506
Interest income	93,841	33,630
Gain on lease termination	13,677	(178,000)
Net assets released from donor restrictions	-	-
TOTAL SUPPORT AND REVENUE	3,247,485	2,715,215
EXPENSES		
Program	2,441,241	1,920,680
Management and general	251,060	388,479
Fundraising	499,148	451,214
Total expenses	3,191,449	2,760,373
Changes in net assets	56,036	(45,158)
NET ASSETS, BEGINNING	3,124,040	3,169,198
NET ASSETS, ENDING	3,180,076	3,124,040

GLOBAL LYME ALLIANCE, INC.

Where Your Money Goes

- PROGRAMS
- FUNDRAISING
- ADMINISTRATION



THANK YOU

FOR YOUR ONGOING SUPPORT

To make a donation, visit gla.org/donate
or call 203-969-1333



GLOBAL
LYME
ALLIANCE